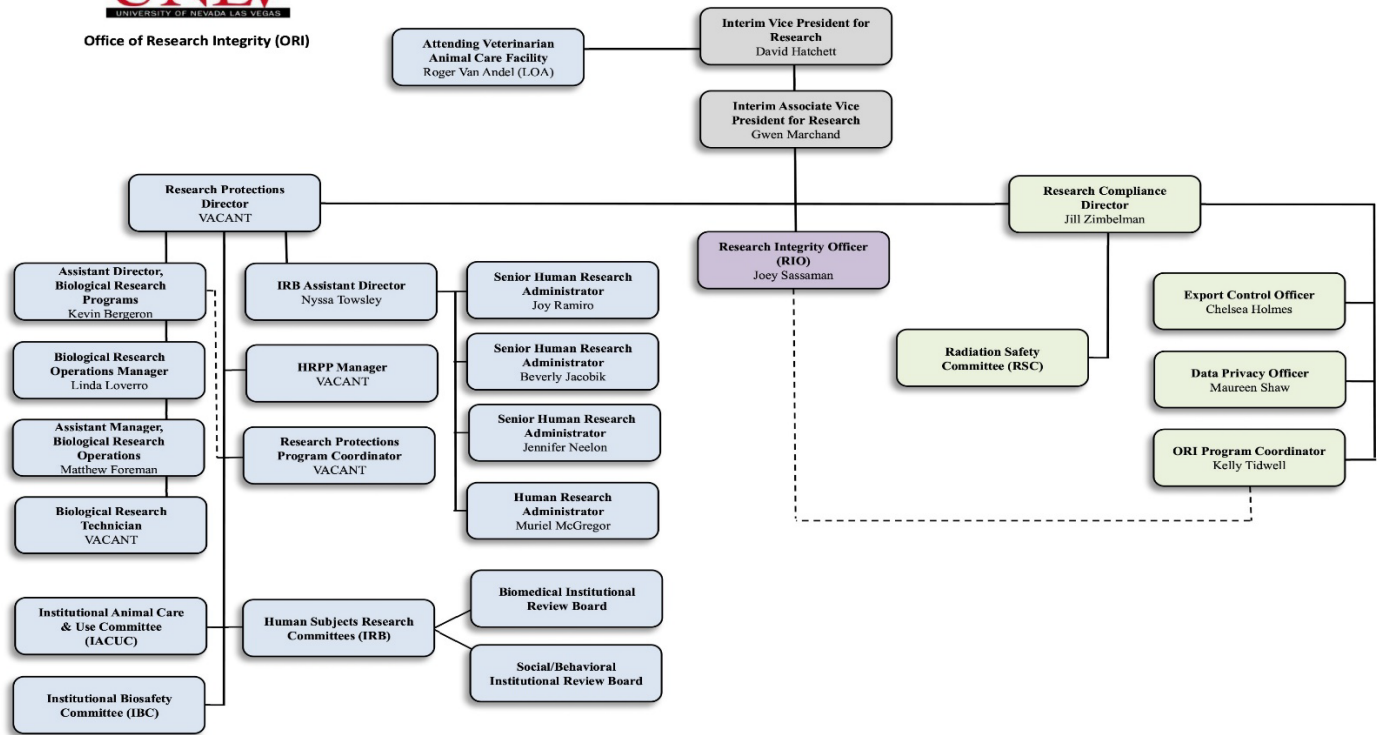




Office of Research Integrity (ORI)



02/05/2024

## Office of Research Integrity (ORI) Organizational Chart

David Hatchett, Interim Vice President for Research

Gwen Marchand, Interim Associate Vice President for Research

- **Office of Research Integrity**
  - Research Integrity Officer, Joey Sassaman
  - Jill Zimbelman, Research Compliance Director
  - Maureen Shaw, Data Privacy Officer
  - Chelsea Holmes, Export Control Officer
  - Kelly Tidwell, Program Coordinator
  
- **Biological Research Program**
  - Roger Van Andel (LOA), Attending Veterinarian, Animal Care Facility
  - Kevin Bergeron, Assistant Director, Biological Research Programs
    - Linda Loverro, Manager, Animal Care Facility
      - Matthew Foreman, Assistant Director, Animal Care Facility
      - VACANT, Biological Research Technician

- **Human Subjects Research**
  - VACANT, Research Protections Director
    - Nyssa Towsley, Assistant Director, IRB
      - Joy Ramiro, Senior Human Research Analyst
      - Beverly Jacobik, Senior Human Research Analyst
      - Jennifer Neelon, Senior Human Research Analyst
      - Muriel McGregor, Human Research Analyst
      - VACANT, Research Protections Program Coordinator
  
- **Regulatory Committees**
  - Institutional Animal Care & Use Committee (IACUC)
  - Human Subjects Research Committees (IRB)
    - Biomedical Institutional Review Board
    - Social Behavioral Institutional Review Board
  
- **Safety Committees**
  - Radiation Safety Committee (RSC)
  - Chemical Safety Advisory Committee (CSAC)
  - Institutional Biosafety Committee (IBC)
  - Laser Safety Advisory Committee (LSAC)